



COMPLETE WALL TRACKS™ WORLD

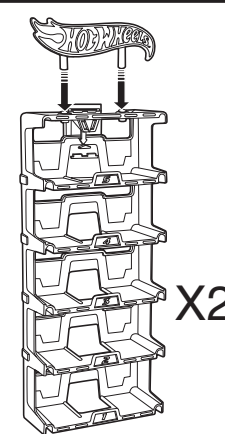
INSTRUCTIONS

Keep these instructions for future reference as they contain important information.

CONTENTS

- Set also includes:
1. DRIFT RALLY SPINOUT™
 2. DAREDEVIL CURVE™
 3. DOWNHILL FLIP DROP™
 4. Starter Set

NOTE: For contents of DRIFT RALLY SPINOUT™, DAREDEVIL CURVE™, DOWNHILL FLIP DROP™ and Starter Set, refer to the respective Hanging Template.



X2

4+



W2815-0920

X10

WARNING:
CHOKING HAZARD - Small parts.
Not for children under 3 years.

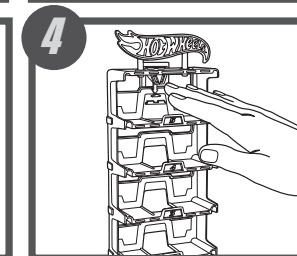
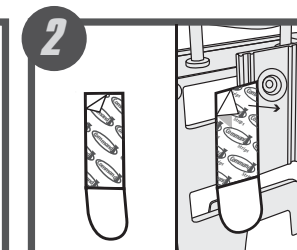
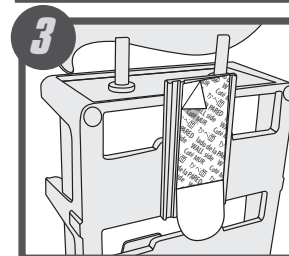
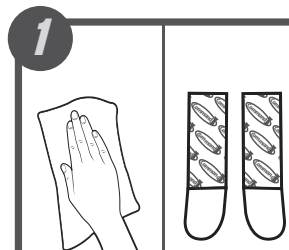
DISPLAY RACK

NOTE TO PARENTS: Make sure wall surface is clean and dry. 3M recommends isopropyl rubbing alcohol. Do not use household cleaners.

Remove red liner from Command™ Strip and apply to back of display rack hanging plate. Make sure the strip tab is accessible under the plate for future removal.

Remove black liner from Command™ Strip.

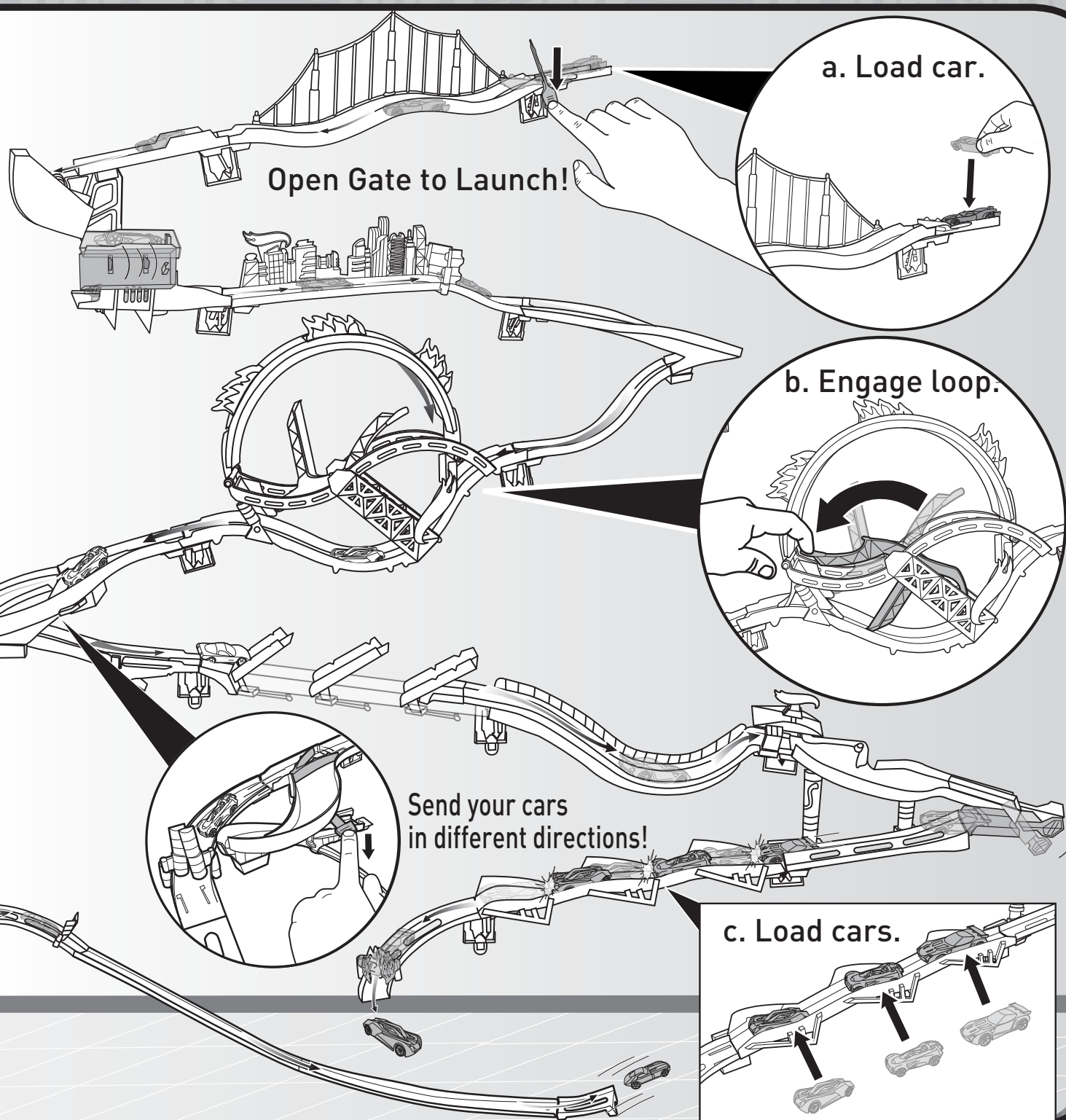
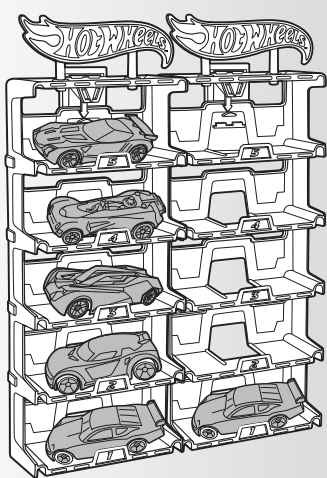
Press display rack to surface and hold firmly for 30 seconds.



©2011 Mattel, Inc. All Rights Reserved. Mattel, Inc., 636 Girard Avenue, East Aurora, NY 14052, U.S.A. Consumer Relations 1-800-524-8697. Mattel U.K. Ltd., Vanwall Business Park, Maidenhead SL6 4UB. Helpline 01628 500303. Mattel Australia Pty. Ltd., Richmond, Victoria, 3121 Consumer Advisory Service - 1300 135 312. Mattel East Asia Ltd., Room 1106, South Tower, World Finance Centre, Harbour City, Tsimshatsui, HK, China. Diimport & Diedarkan Oleh: Mattel SEA Ptd Ltd.(993532-P) Lot 13.5, 13th Floor, Menara Lien Hoe, Persiaran Tropicana Golf Country Resort, 47410 P.J. Tel:03-78803817, Fax:03-78803867. service.mattel.com

TO PLAY

NOTE TO PARENTS: If assembled set is too high for your child, remove Downhill Flip Drop™ from the wall. Replace Daredevil Curve™ with Downhill Flip Drop™ for more variety.

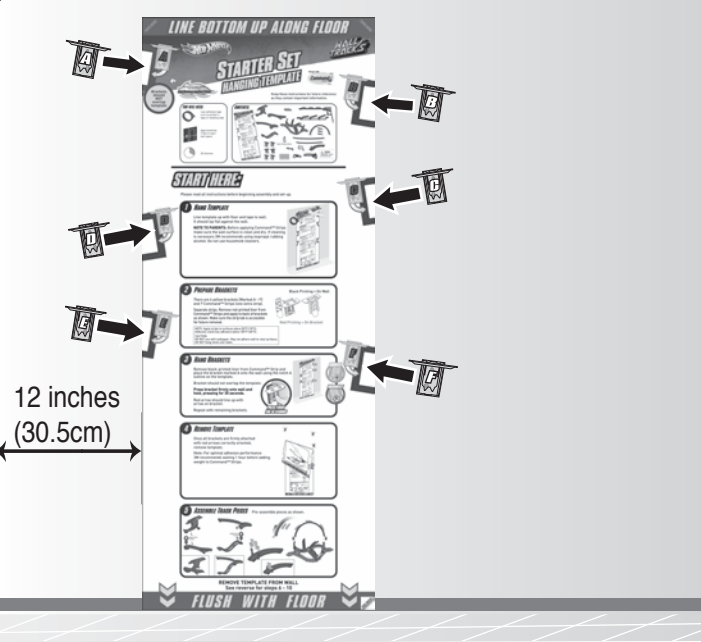


FRONT

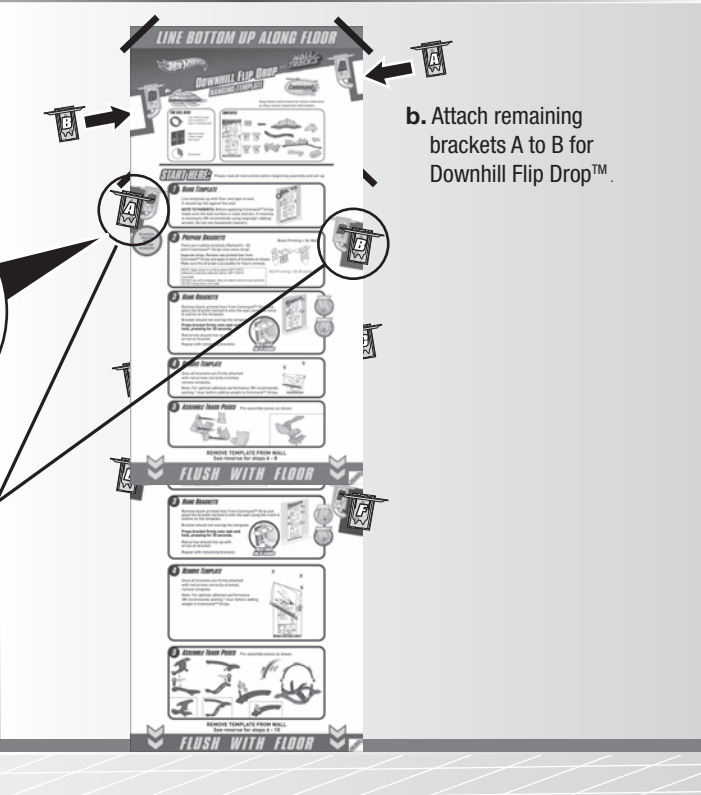
CONNECT

Template should be 12 inches from the corner as shown.

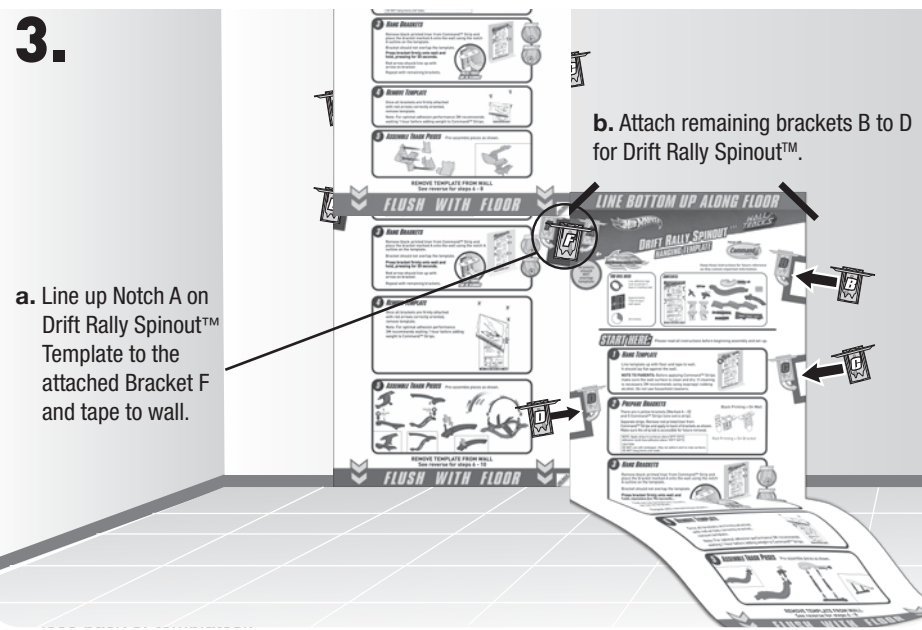
1. Tape Starter Set Template to wall and follow template instructions to attach brackets A to F.



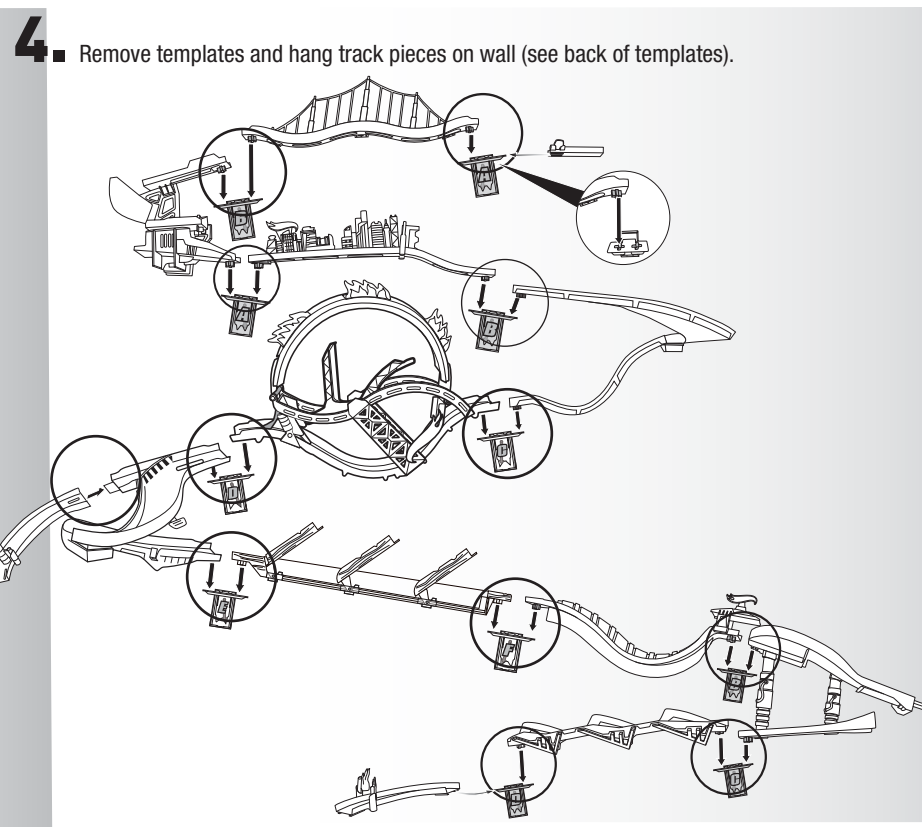
2. a. Line up Notch C/D on Downhill Flip Drop™ Template to the attached Bracket A/B and tape to wall.



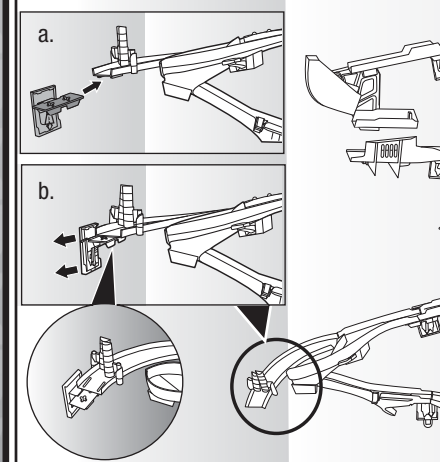
3.



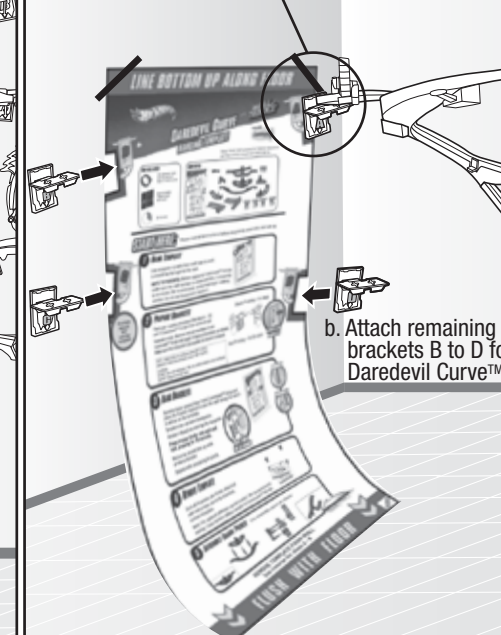
4.



5. Insert Bracket A from Daredevil Curve™ at the end of the Starter Set left-hand curve and attach to wall.

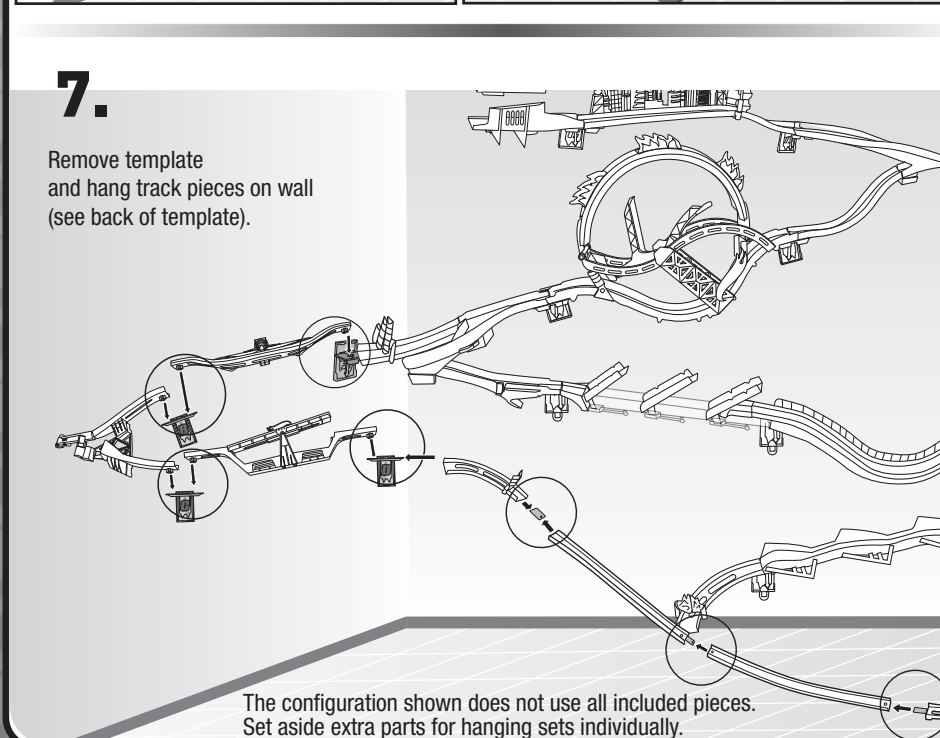


6. a. Line up Notch A on Daredevil Curve™ Template to the attached Bracket A and tape to wall.



7.

Remove template and hang track pieces on wall (see back of template).



BACK

| INSTRUCTION SHEET SPECIFICATIONS | |
|----------------------------------|------------------|
| Toy No.: | W2815 |
| Part No.: | 0920 |
| Trim Size: | 16.5" W x 8.5" H |
| Folded Size: | 5.5" W x 8.5" H |
| Type of Fold: | Single |
| # colors: | One |
| Colors: | Black |
| Paper Stock: | White Offset |
| Paper Weight: | 70 lb. |
| EDM No.: | |
| Date: | APR. 14, 2011 |

